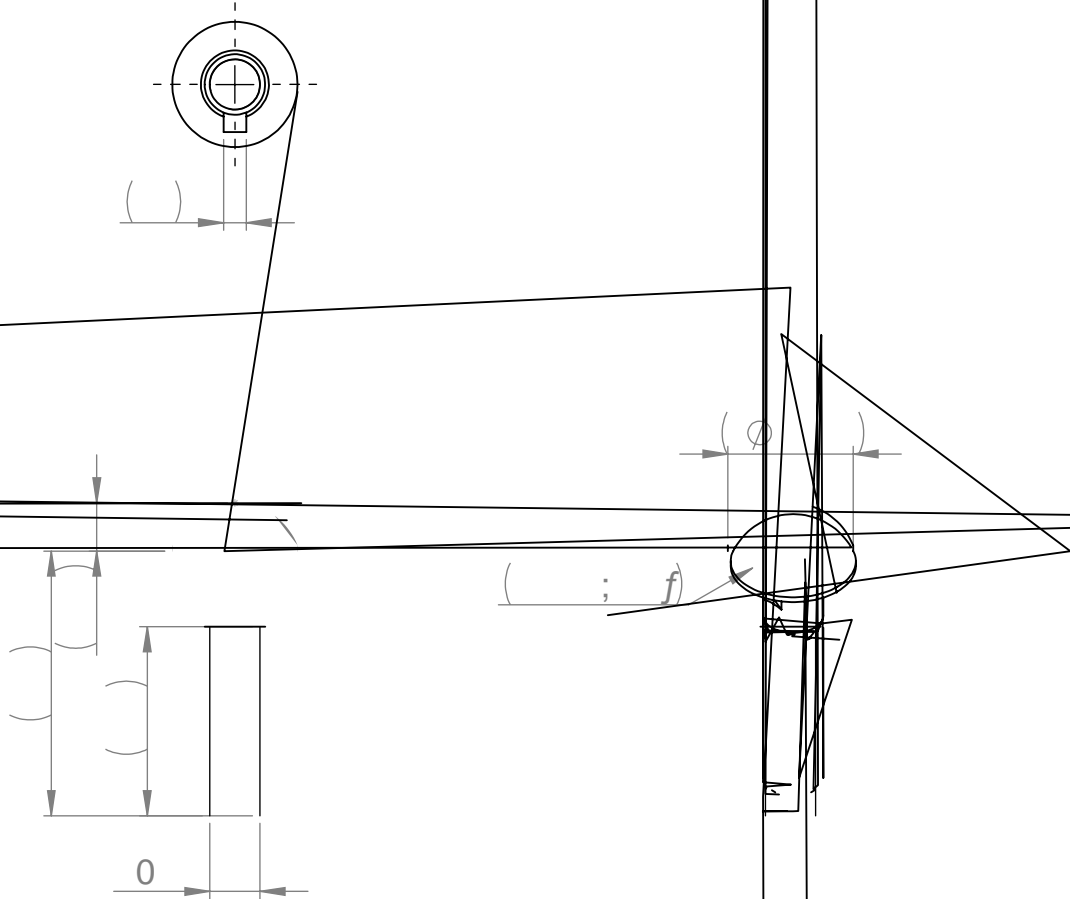


5HY	'DWH	5HYLVHG	E\ & 1	'HVFULSWLRQ RI FKDQJHV
\$a	-DQ	6WHIDQ 1LOVVRQ	'UDZLQJ UHOHDVHG	

35(5(/(\$6(
 '(6,*1 (1*5 'DWH BBBBBBBBBBBBBBBBBB
 0)* 64 (1*5 'DWH BBBBBBBBBBBBBBBBBB
 48\$/ ,7< 'DWH BBBBBBBBBBBBBBBBBBBBBB



127(6
 9,(:6 \$1' ',0(16,216)25 5()(5(1&(21/<
 63(& ,),&\$7,216 \$&& 72 3\$57 '(6&5,37,21

:KLWH FRORU
 &RUURVLRQ UHVLVWDQFH DFF WR ,62
 PLQLXP K ZLWKRXW ZKLWH UXVW K ZLWKRXW UHG UXVW

0\$7(5,\$/ 6HH VWDQGDUG	0\$7 67\$1'\$5'	0\$7)\$0,/< 6WHHO		5(9,6,21 /2&\$7,21
92/80(PP	72/(5\$1&(6 63(&			&5,7,&\$/ 48\$/ ,7< \$775
0\$66 NJ),1.6+			.(< &+\$5\$&7(5,67 &
'(16,7< NJ P				k,19\$&\$5(&253
72; ,&,7< 5(\$&+ UHJXODWLRQ DQG 5R% & 2LOB\$7VWLYH<				81,76 \$5(0,/,0(7(5\$
5(9,6,21 67\$786				81/(66 27+(5:,6(63(&),('
3(1',1* 287&20(2) 35(5(/(\$6(&+\$1*(63\$57 '(6&5,37,21				\$87+25 6WHIDQ 1LOVVRQ 5(\$7,21 '\$7('HF
5(9,6,21	& 1 J	5(9,6(' %< 6((5(9,6,21 7\$%/(% 2/7 0 [51 ' +'	
\$a	'\$7(6((5(9,6,21 7\$%/()250\$7 \$ 6&\$/(1, % ',1	:+,7(
		6+((7 2)		5\$: ,1* J 3\$57 J